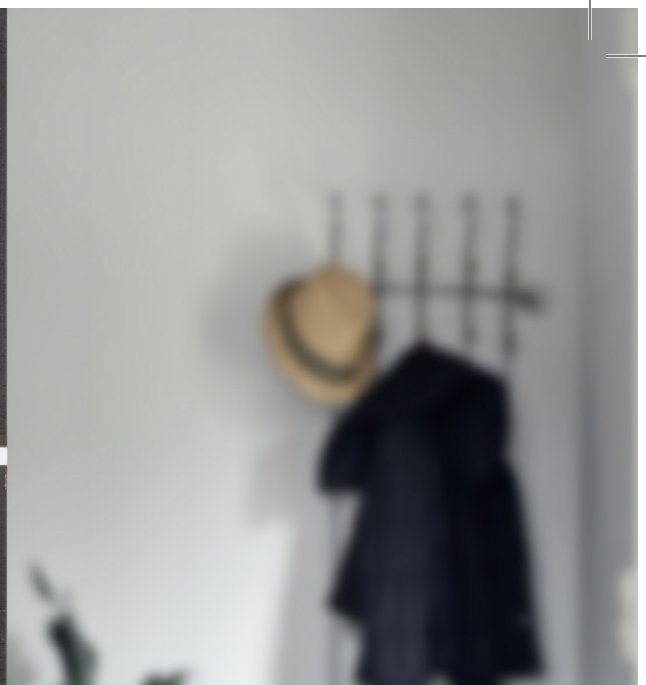


# Introducing DAYTONA x REGINA

Safe Lock by Weiser was designed with one thought in mind, providing you with quality, dependability, and security. A favoured mix of styles and finishes ensure that you provide the look and feel that families want. The perfect starter home package designed to leave a lasting impression.



**SAFE LOCK**  
by WEISER



## SPECIFICATIONS

<b>Door prep</b>	Deadbolt: Cross Bore 2-1/8" or 1-1/2" Edge Bore 1" Latch Face 1" x 2-1/4"
<b>Backset</b>	Deadbolt: Adjustable to 2-3/8" or 2-3/4" Handle: Adjustable to 2-3/8" or 2-3/4"
<b>Door Thickness</b>	1-3/8" - 1-3/4" doors standard. No thick door option
<b>Cylinder</b>	KW 5 pin
<b>Faceplate</b>	1" x 2-1/4", square corner
<b>Strikes</b>	Deadbolt: 1" x 2-1/4", square corner Handle: 2-1/4", square corner
<b>Bolt</b>	Deadbolt: 1" throw Handle: 1/2" throw
<b>Door Handing</b>	Non-handed
<b>ANSI/BHMA</b>	A156.5 Grade 3 Deadbolt
<b>ADA</b>	N/A
<b>UL</b>	N/A
<b>Warranty</b>	Lifetime Mechanical and Lifetime Finish

## FINISHES



**514** | Matte Black

**15** | Satin Nickel

**SAFE LOCK**  
by **WEISER**

weiserlock.com  
1-800-501-9471